



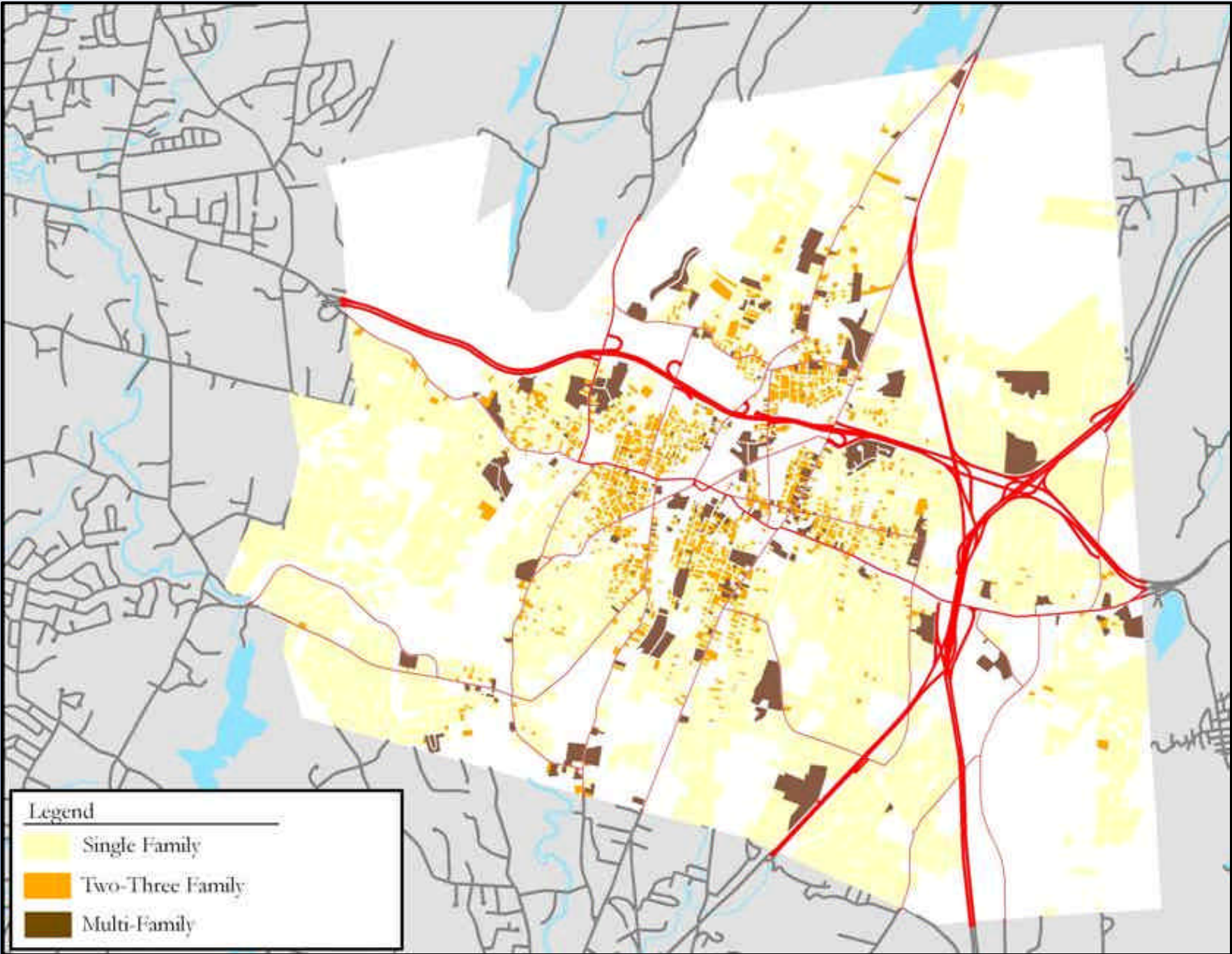
City of Meriden Plan of Conservation And Development



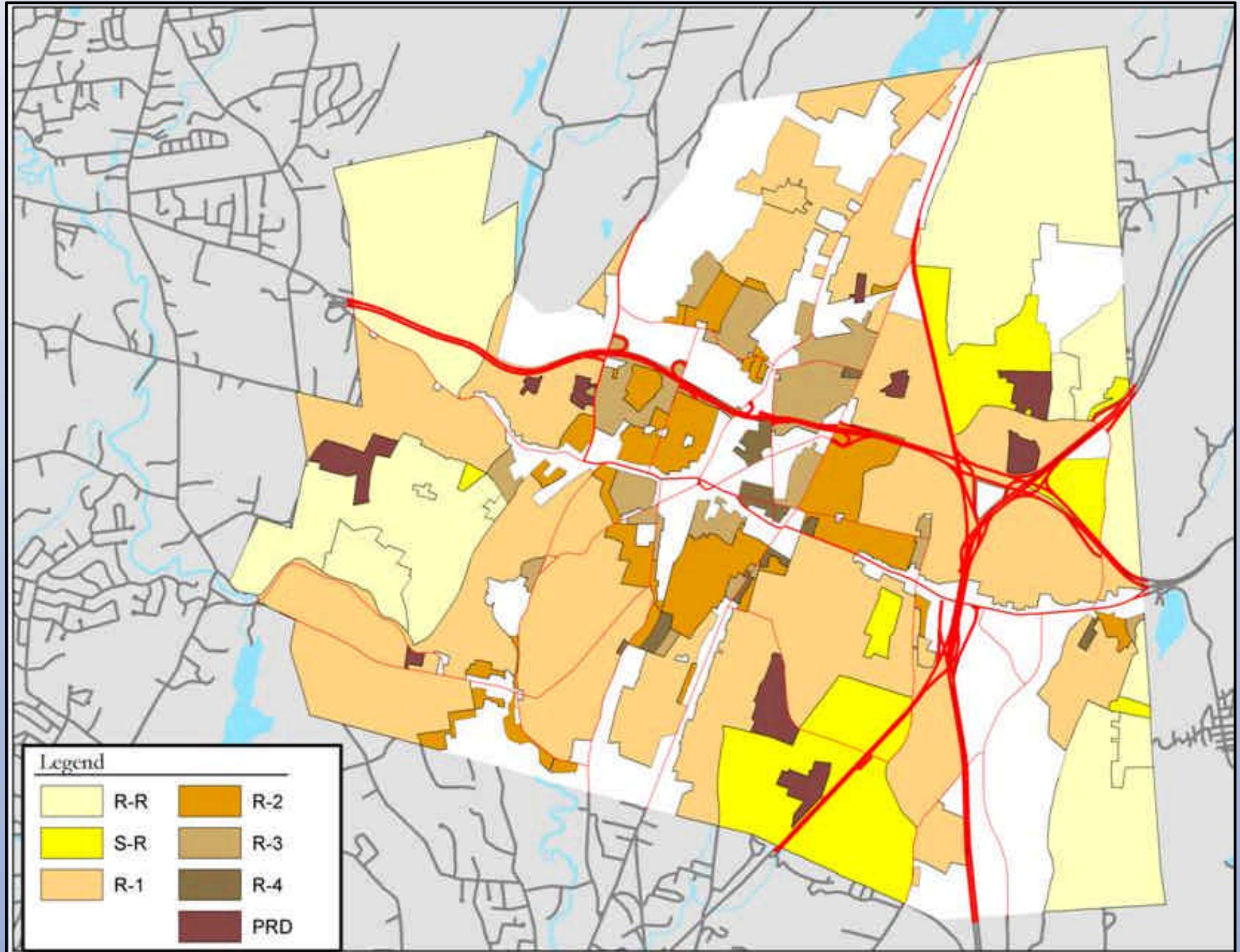
Planning For
Meriden's Future

Residential Uses

Existing Land Use - Residential



Residential Zones





City of Meriden

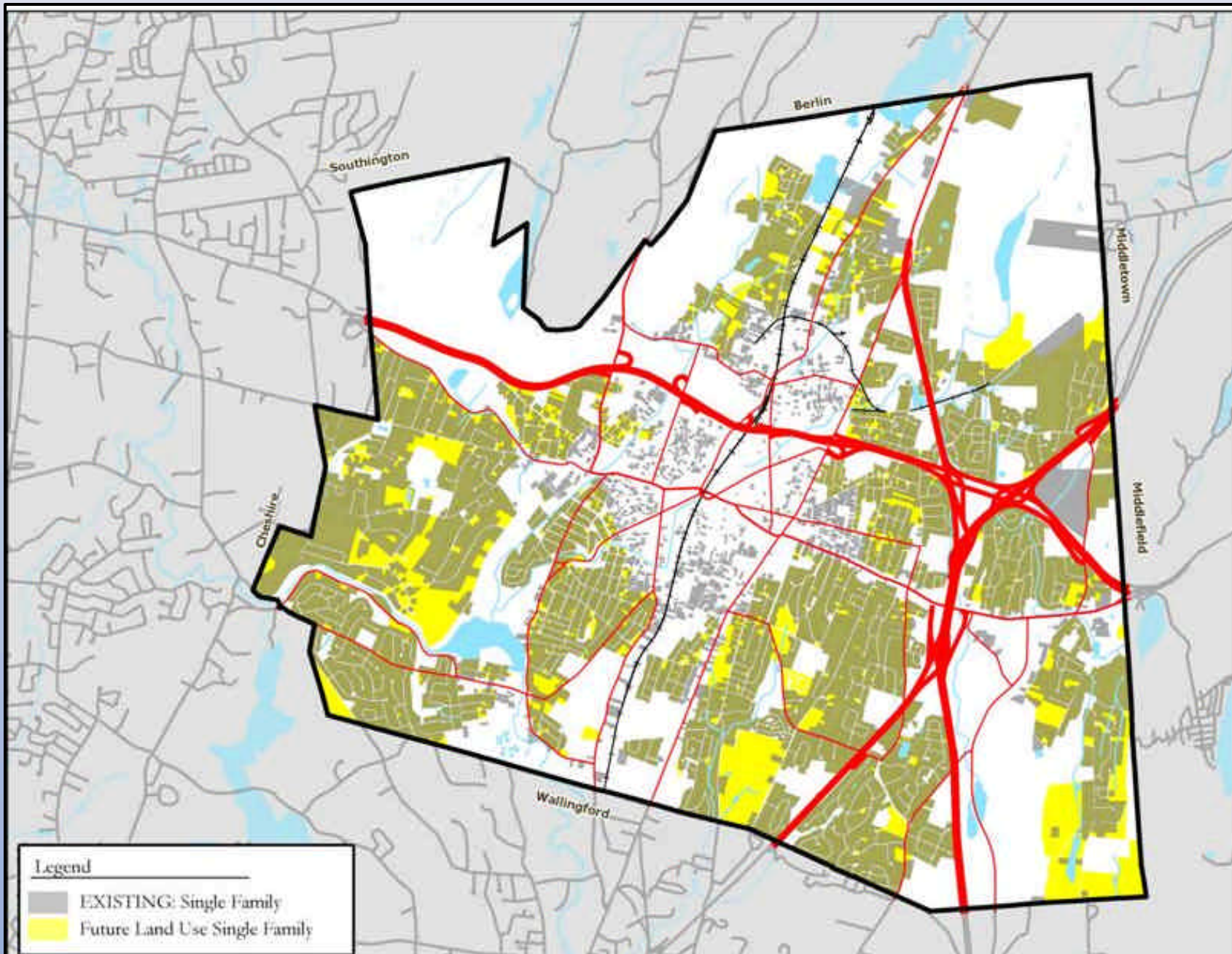
Plan of Conservation And Development

Low Density Residential

- **Single Family Residential Areas**
 - Low Density 1 - Lot size greater than 40,000 sqf
 - Generally follow Rural Residential (R-R) zones
 - Low Density 2 - Lot size less than 40,000 sqf
 - Generally follow Suburban Residential (S-R) & Single Family (R-1) zones
- **Preserves the residential character of the established residential neighborhoods of the City**



Low Density: Existing & Future Land Use Overlay





City of Meriden

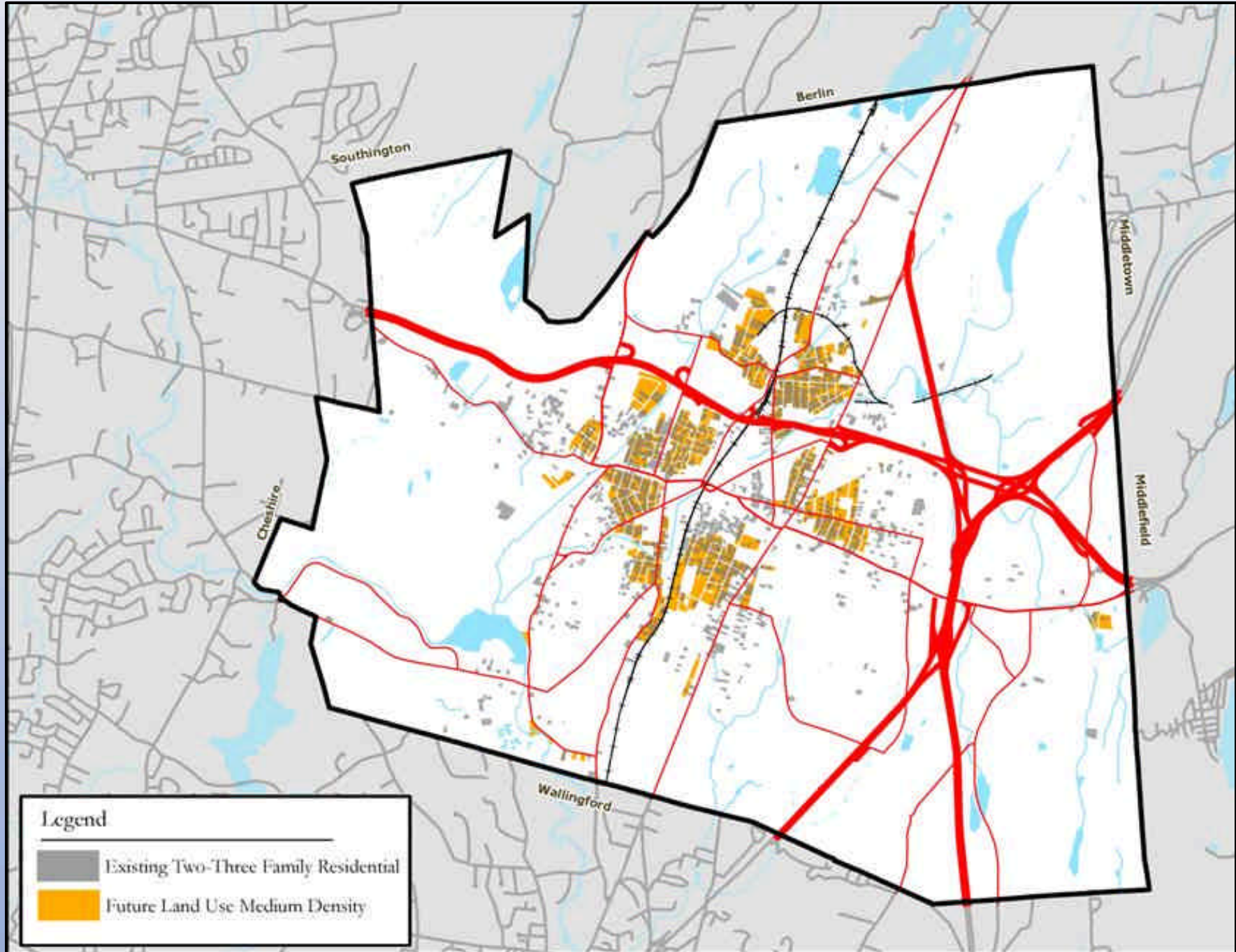
Plan of Conservation And Development

Medium Density Residential

- **Typically areas of one, two, & three family housing**
 - Older housing stock on lots of varying lot size.
 - Generally follow boundaries of the Two & Three Family Residential zones (R-2) & Multi-Family Residential (R-3).
 - These are areas of Meriden that may be suitable for small-scale attached senior housing.



Medium Density: Existing & Future Land Use Overlay





City of Meriden

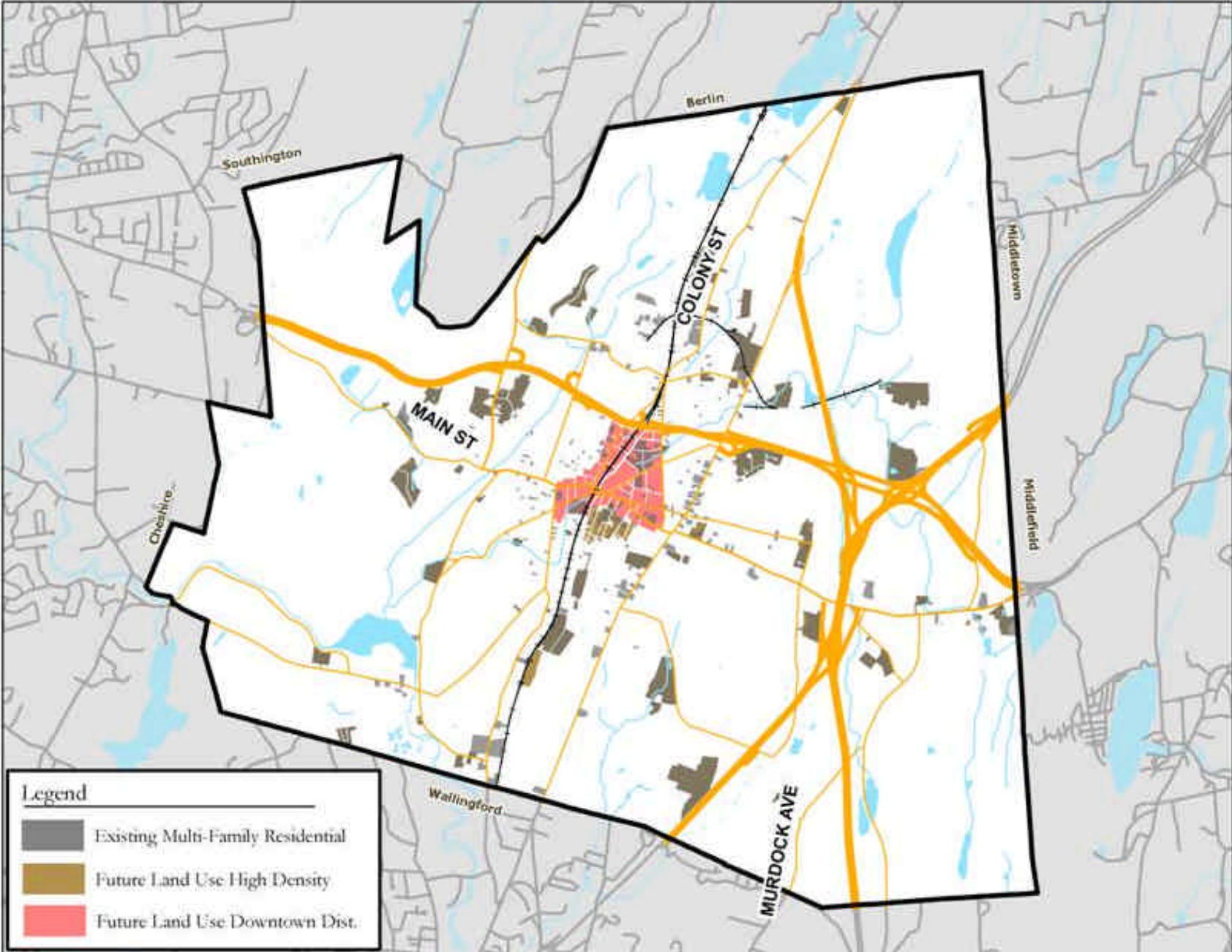
Plan of Conservation And Development

High Density Residential

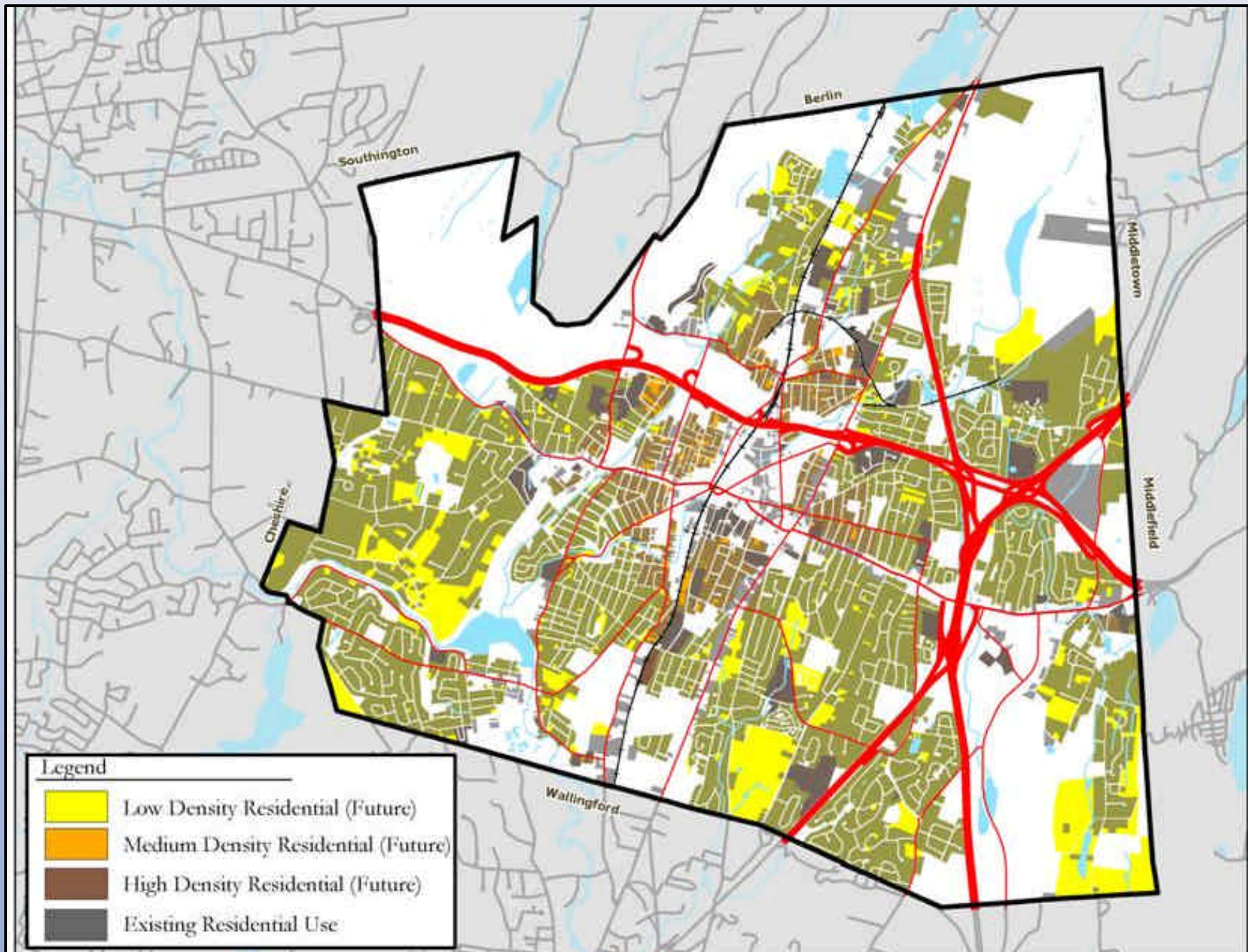
- **Generally reflect the existing higher density housing such as that found in Planned Residential Developments (PRD).**
- **Two Sub-Categories**
 - Limited High Density- Multi-family development not exceeding three stories or 8-units to a structure.
 - High Density Multi-Family - Reflect existing higher density housing like those found in the Planned Residential Development Districts



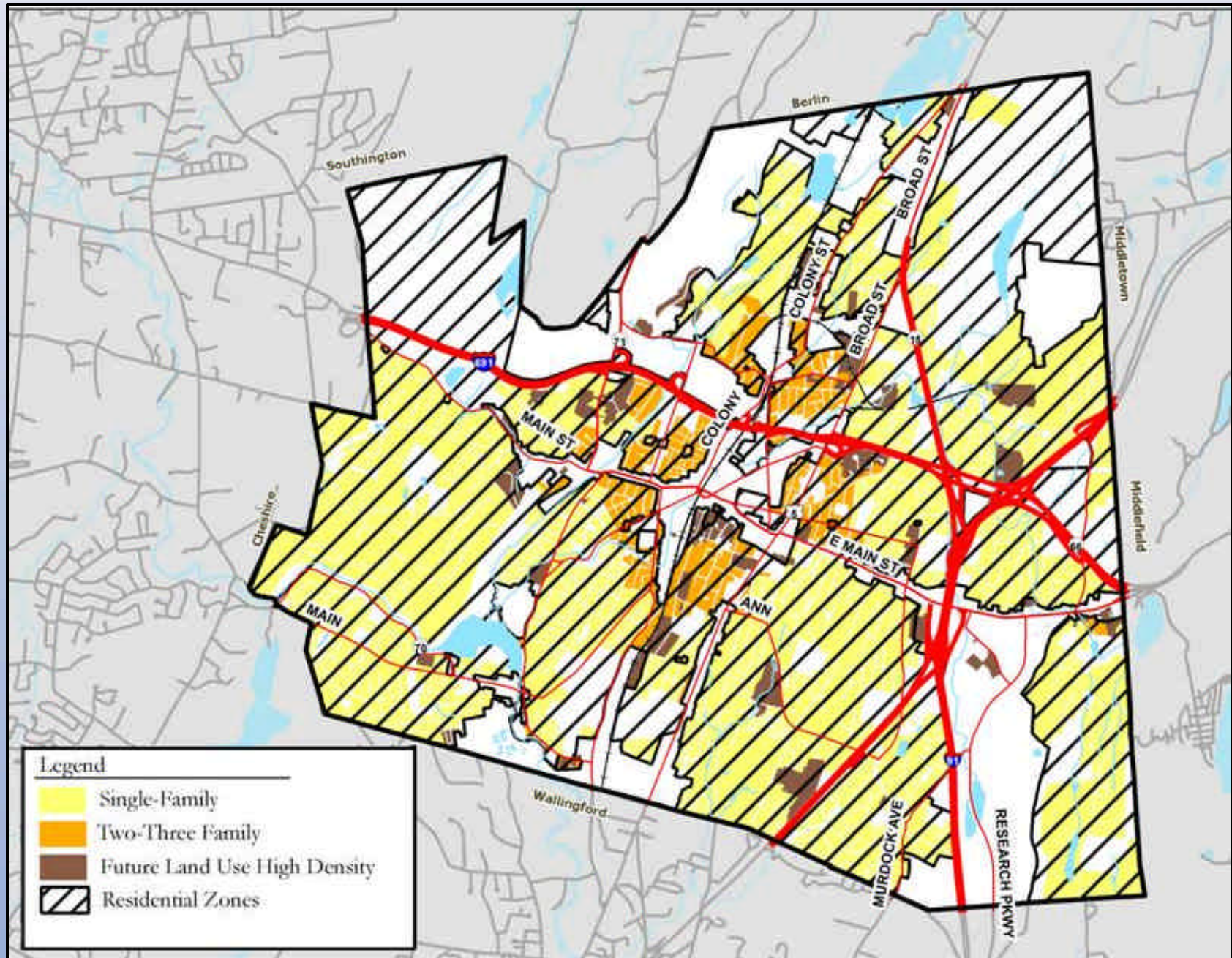
High Density: Existing & Future Land Use Overlay



Existing Land Use & Future Land Use Overlay



Future Land Use & Zoning Overlay



Future Land Use Residential

